



# North America Product Portfolio



---

# Quick Links

[Our History](#)

[Portfolio of Surfacing Solutions](#)

[Formica® HPL \(High Pressure Laminate\)](#)

- [Solid](#)
- [Pattern](#)
- [Woodgrain](#)
- [Stone](#)

[FENIX® Innovative Materials](#)

[Homapal® Metals](#)

[180fx® Laminate](#)

[Formica® Markerboard](#)

[Formica Envision™](#)

[HardStop®](#)

[Formica Envision™ HardStop®](#)

[Formica® Laminate Antibacterial Collection](#)

[ColorCore®2](#)

[Formica® Compact](#)

[Everform® Solid Surface](#)

[IdealEdge®](#)

[Trespa® TOPLAB®](#)

[Arpa®](#)

[Hartson-Kennedy®](#)





Founded in Cincinnati in 1913

1913-1927 The era of laminate

Our founders, electrical engineers Daniel J. O'Connor and Herbert A. Faber discover that high-pressure plastic resins can be used to make electrical parts, replacing the mineral mica, and establish the Formica Products Company in 1913.

As they were searching for a substitute “for” an insulation material “mica,” they coined the name “Formica.”

By 1930, the Company begins to make the shift from industrial applications to decorative laminate products.



FENIX®

HOMAPAL®

Arpa

TRESPA®  
TOPLAB®

HK Hartson  
Kennedy



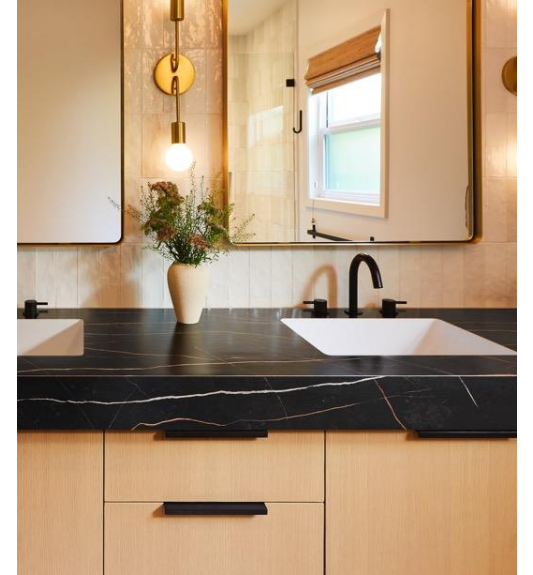
# 1930-1970s



Driven by innovation, our founders Faber and O'Connor pioneered experiments with high-pressure laminate technology. By the 1940s, Formica® Laminate had revolutionized the industry, emerging as a groundbreaking material for kitchen and bathroom surfaces.



# Today...



The evolution of Formica® Laminate has transformed it from a simple countertop material to a versatile design element used across various industries and applications. The average person encounters Formica® Products ~20 times a day.

Ongoing development continues to open new possibilities for interior design and functional surfaces.



Our portfolio of surfacing solutions delivers industry-leading service, exciting design, functional beauty, smart solutions, and purposeful innovation for our customers' diverse projects.

Our ongoing commitment to our customers ensures that our products remain the go-to-choice for transformative, practical aesthetics in any space.

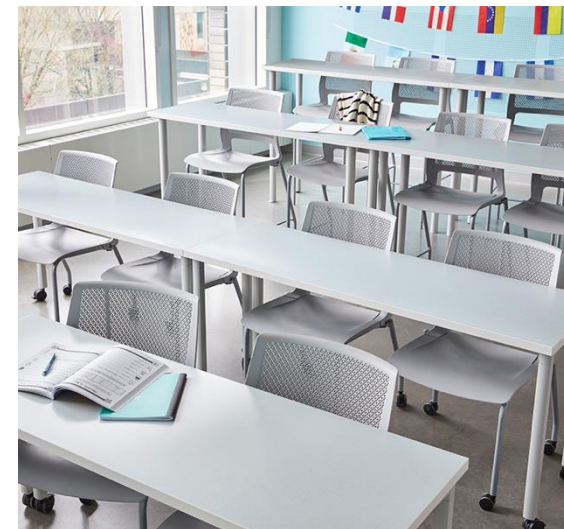


The original high-pressure laminate (HPL).

Leading provider of on-trend surfacing solutions for residential and commercial projects.

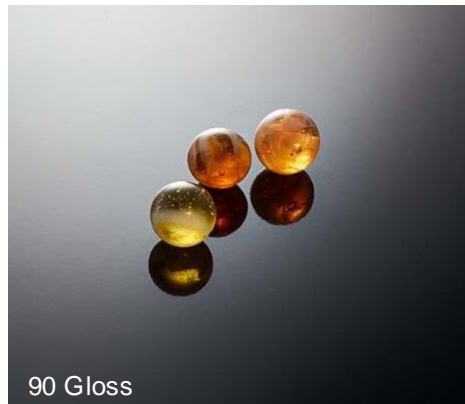
A broad portfolio of products to support any design challenge.

- Solid colors, patterns, and woodgrains
- Wide selection of textures
- Horizontal & vertical applications
- Scratch, stain, mar & scuff resistant





# Textures for solid colors



# Solid colors



8793-ML Green Slate with Monolith texture





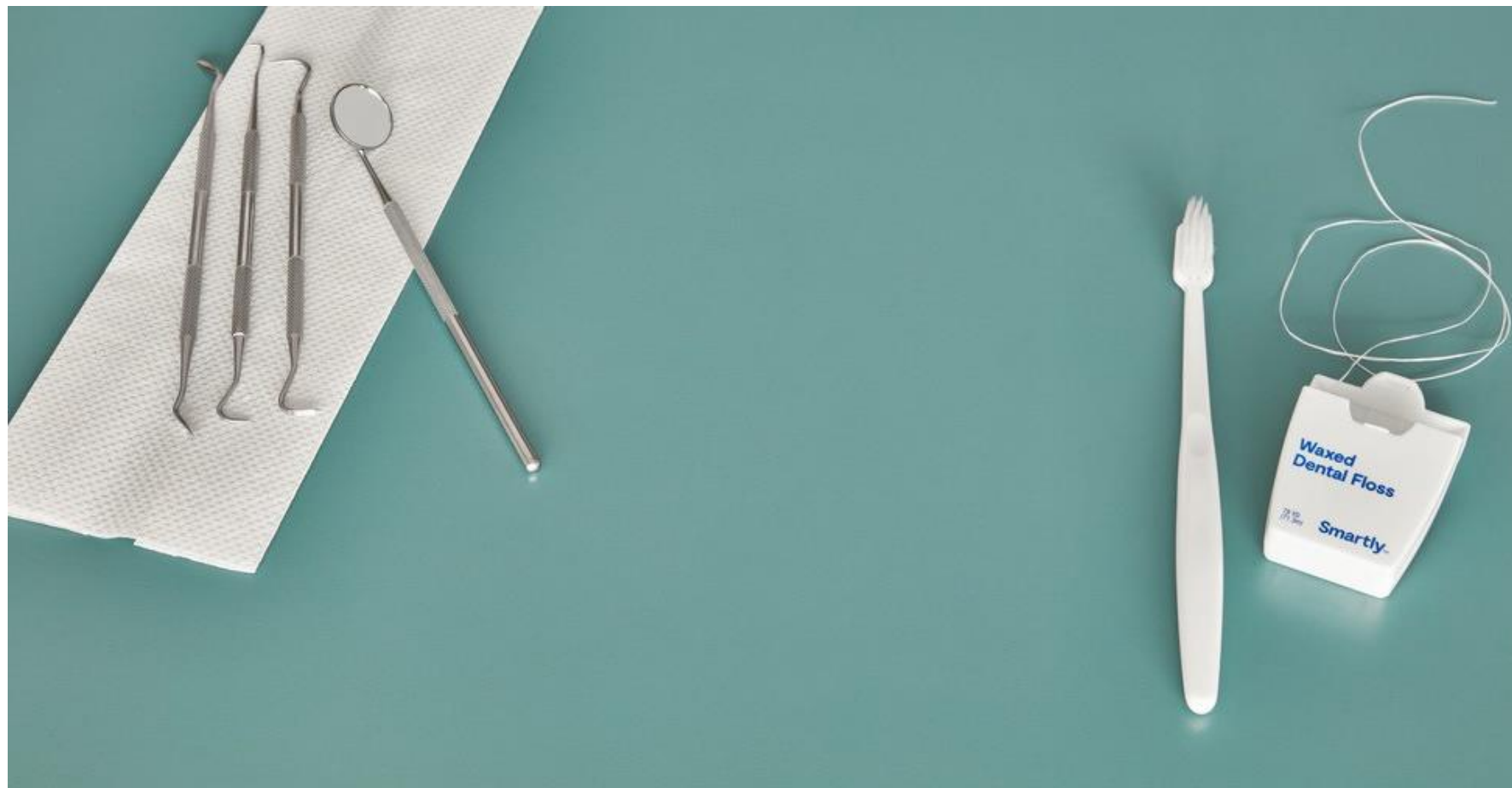
# Solid colors



8792-PX Winter Sky with Plex texture

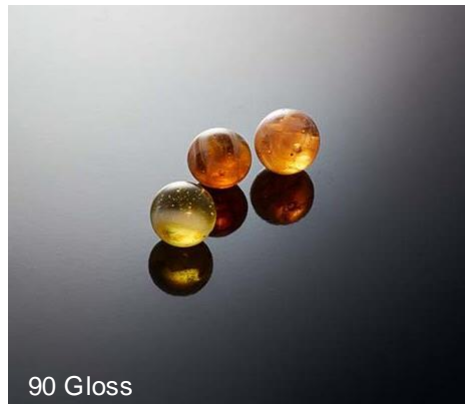


# Solid colors



1198-58 Jadeite with Matte texture

# Textures for patterns





# Patterns



8684-58 Birchbark with Matte texture

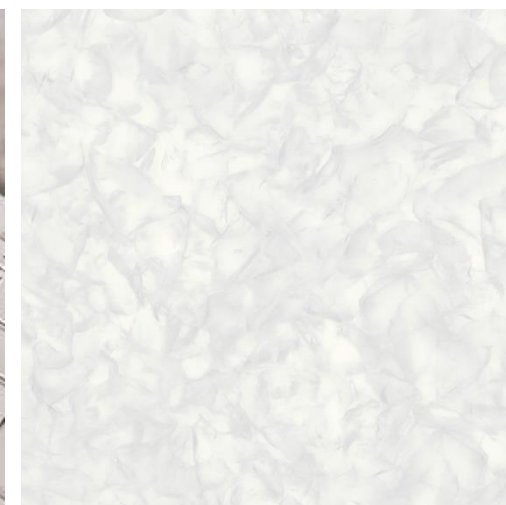




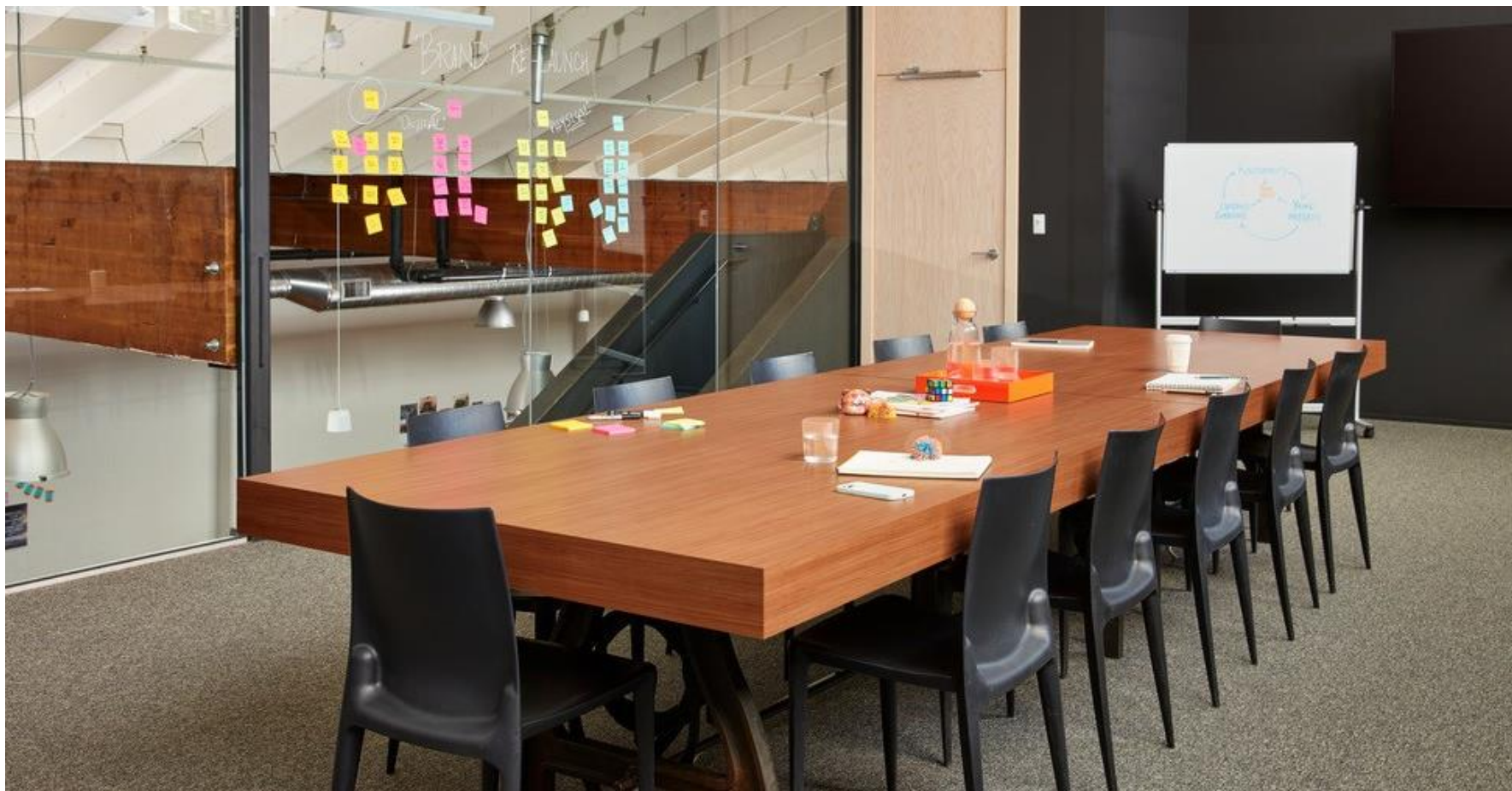
# Patterns



3705-58 Sugar Glass with Matte texture



# Patterns

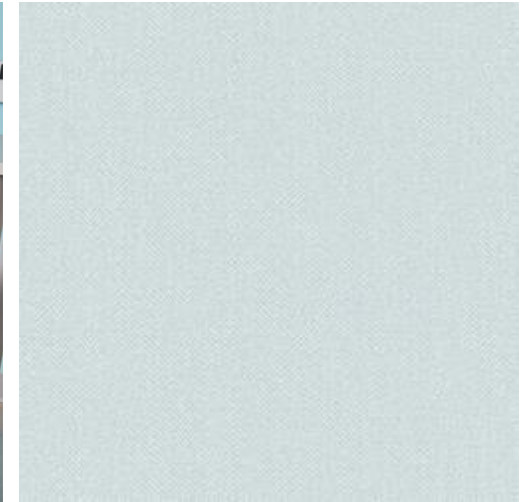


6999-58 Earthenware Brushstroke with Matte texture





# Patterns



8683-58 Glass Cloth with Matte texture



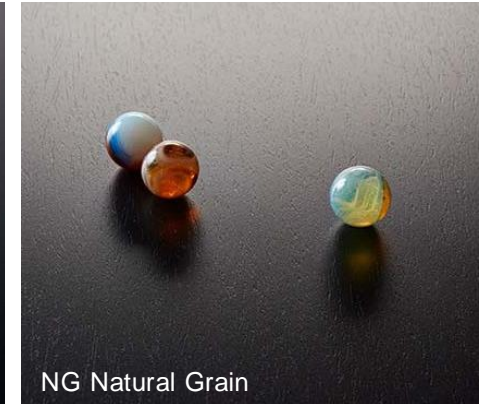
# Patterns



6130-58 Chambray Fabric with Matte texture



# Textures for woodgrains



# Woodgrains



8676-26 Swede Rift Oak with Oiled Wood texture





# Woodgrains



8685-NG Luxe Mango with Natural Grain texture



# Woodgrains



5791-PG Grayed Oak with Pure Grain texture

# Woodgrains



6995-26 Cherry Walnut with Oiled Wood texture

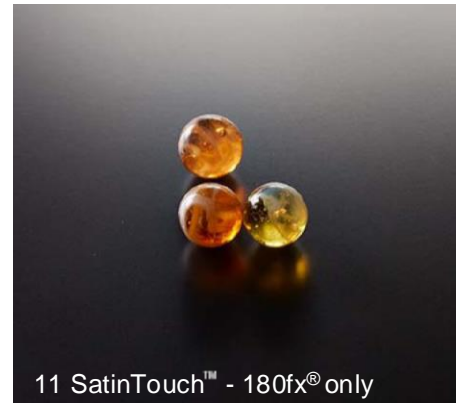


# Woodgrains



8915-NG Walnut Fiberwood with Natural Grain Texture

# Textures for stones





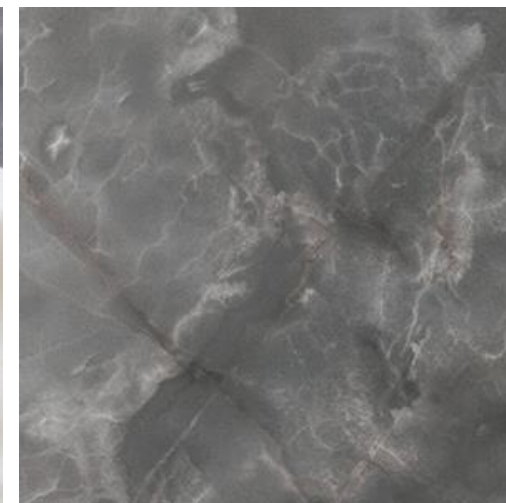
# Stones



9306-ML White Bardiglio with Monolith texture



# Stones



3710-43 Smoke Onyx with Artisan™ texture

# Stones



9922-ML Taj Mahal with Monolith texture



# FENIX®

In 2013, Arpa Industriale created a new material. Drawing inspiration from the Phoenix's legend and its ability to infinitely regenerate, FENIX® marked the beginning of a breakthrough chapter in the story of interior design.

FENIX® provides a technical and aesthetic answer to two important interior design trends: innovative materials and matte surfaces. A combination that makes this material, available in a selection of timeless colors, extremely versatile and suitable for every environment.



# Features

Created with proprietary technologies, FENIX® makes you experience unique features.

At first glance, the surfaces strike for their super-matte appearance.

By touching them, you feel how pleasantly soft they are, with the further surprise of leaving no fingerprints.

Thermal healing of superficial micro-scratches is also possible.



Low-light reflectivity



Soft touch



Anti-fingerprint



Thermal healing  
of superficial  
micro-scratches

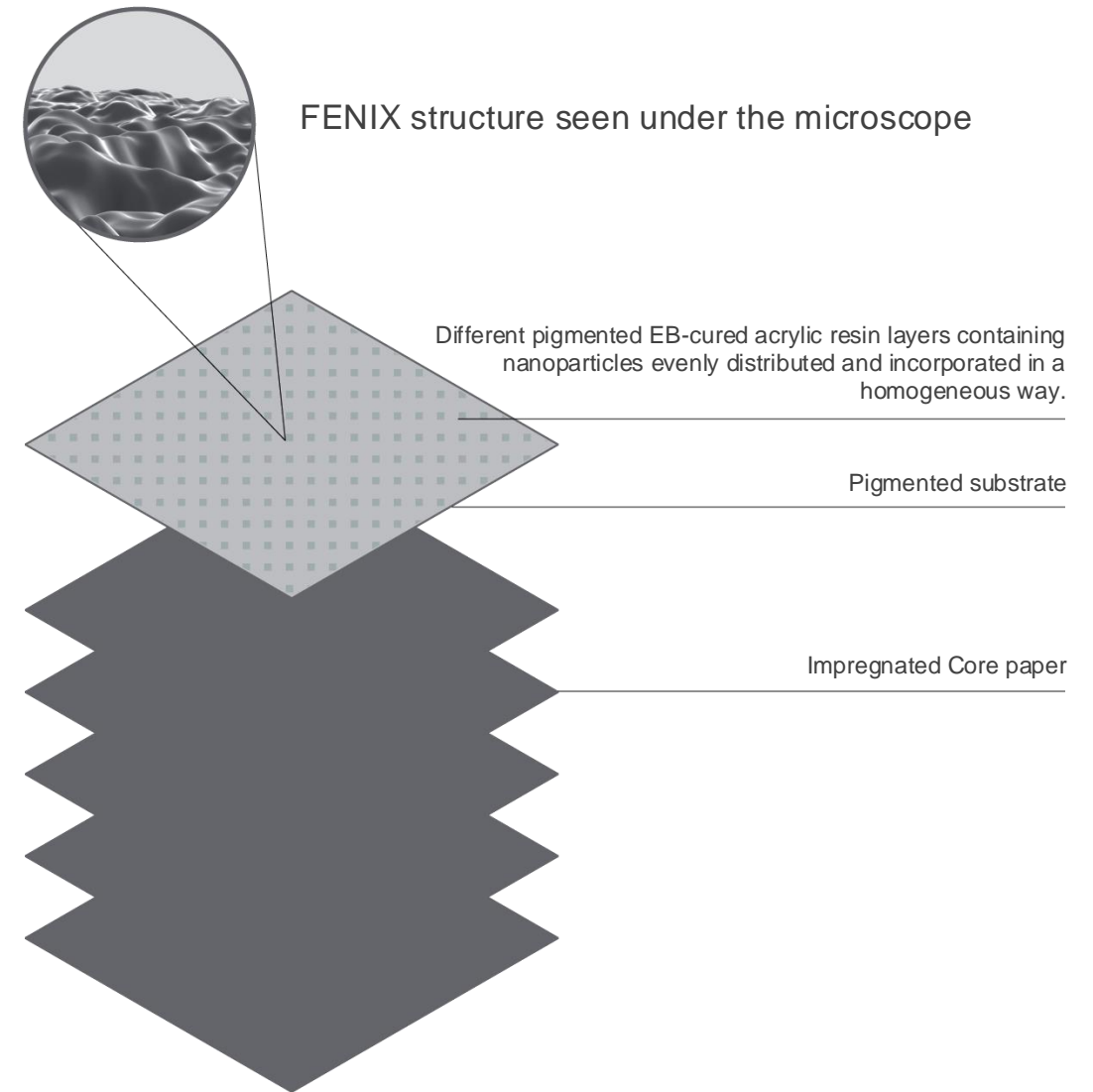


## Production Process

Created with proprietary technologies, the external surface of FENIX® is characterized by the use of next generation acrylic resins, hardened and fixed through an Electron Beam Curing process.

FENIX® is made of paper (over 60%) and thermosetting resins (30 - 40%). FENIX panels are created by a pressing process in which heat and pressure are applied simultaneously in order to obtain a homogeneous non-porous product.

FENIX® NTA contains a real metal structure in its surface layer.



# Cleaning and maintenance

To clean the structure, an essential step is rinsing regularly with water as it avoids that anything stays behind in it. As FENIX® is a strong material, you can also use any household cleaner – even solvents like acetone\* if needed.

To avoid damaging the structure, don't scrub it with an abrasive cream, a scouring pad or a hard brush. Instead, you can use a melamine sponge also known as a magic sponge.

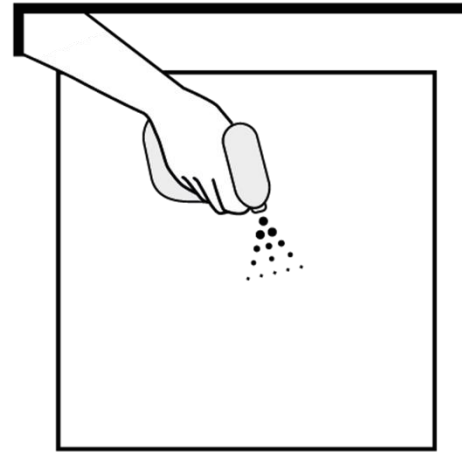
As a final step, always rinse afterward with warm water and wipe dry with a clean cloth.

\*always follow safety instructions.

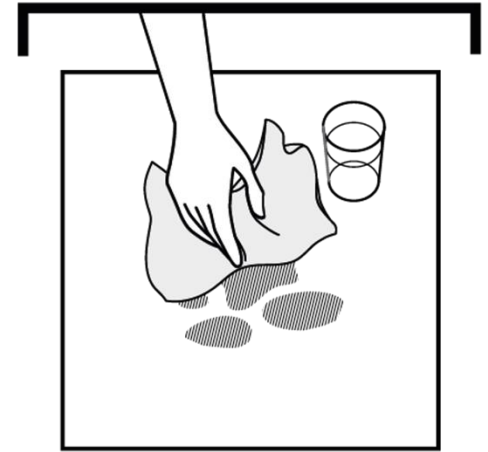
Everyday cleaning

Deep cleaning

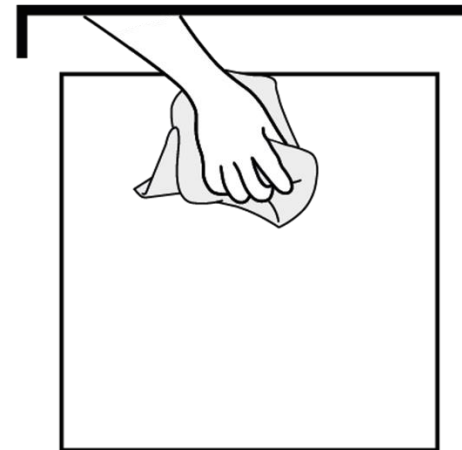
1) Apply cleaning liquid.



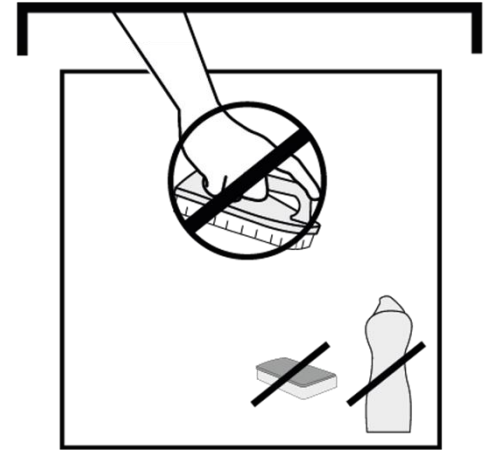
2) Rinse with warm water to loosen any residue.



3) Dry with a clean cloth.

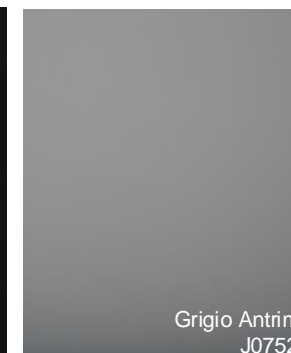
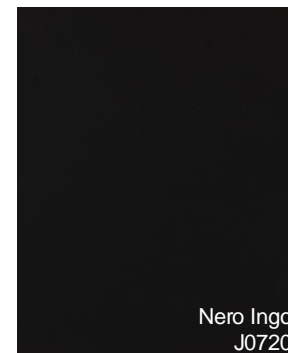


4) Do not use abrasive creams, scouring pads, or hard brushes.





# Commercial



Carlo e Camilla in Duomo by GIO TIROTTO

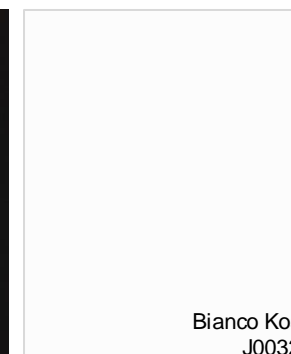
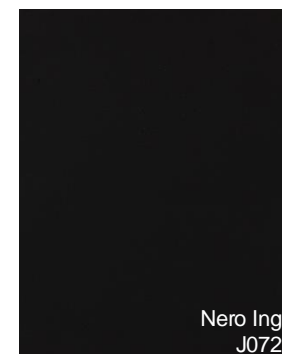
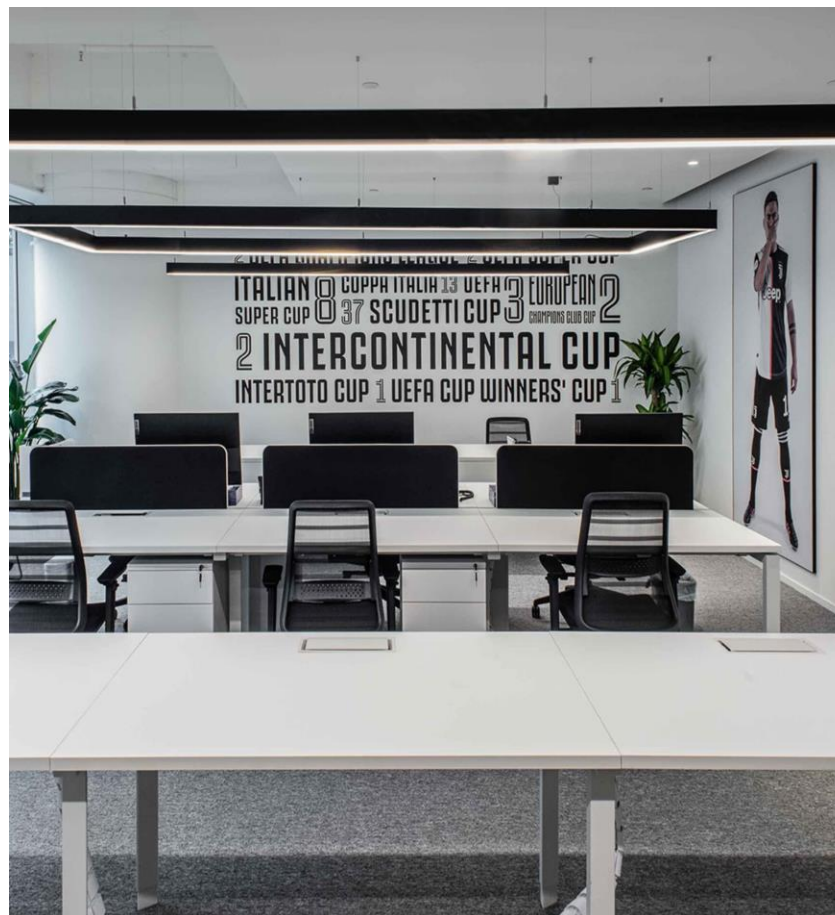
# Commercial



EVAH Corp by Linebox Studio



# Commercial



Juventus Headquarters and Branches by LEM AGENZIA ARCHITETTURA

# Residential



Verde Comodoro  
J0750

Kitchen Cabinetry by Concept 32 Custom Cabinet Studio



# Transportation



Bianco Kos  
J0032

Mobile Camper by ADRIA MOBIL

# Furniture



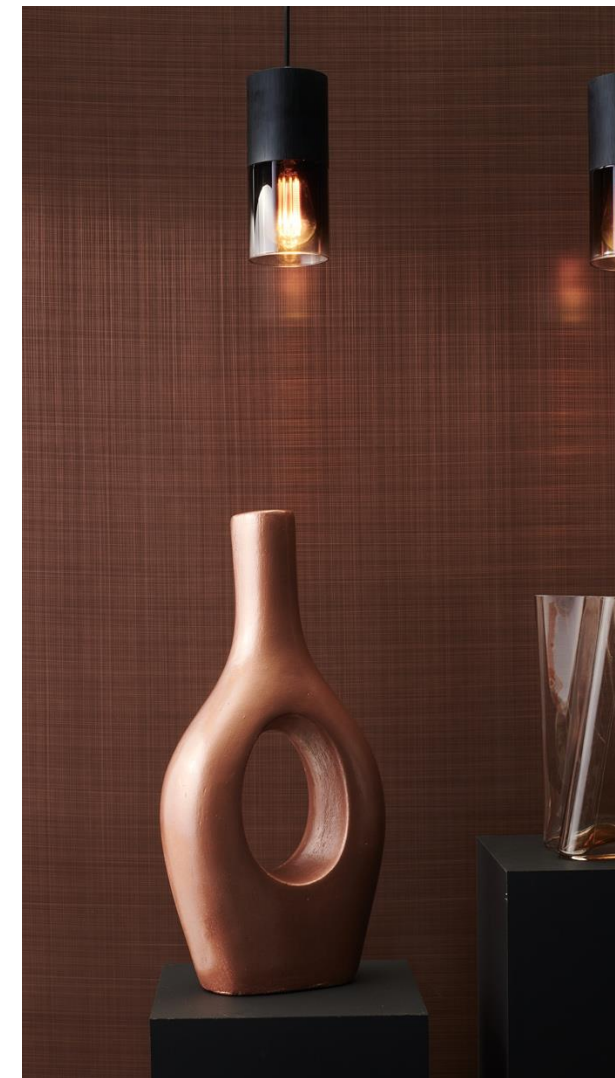
**Bookcase Hive** by LUCIA GALIOTTO





Let your next application shine. HOMAPAL® metals deliver lustrous color and sheen with textures reflecting energy, modernity and a feel for craftsmanship. Perfect for adding flair to vertical applications: walls, furniture, retail fixtures, signage, exhibits and displays.

- Real metal foil, solid metal, or printed solid metals
- Protective coating
- Upscale look
- Vertical application only



FENIX®

H HOMAPAL®

Arpa

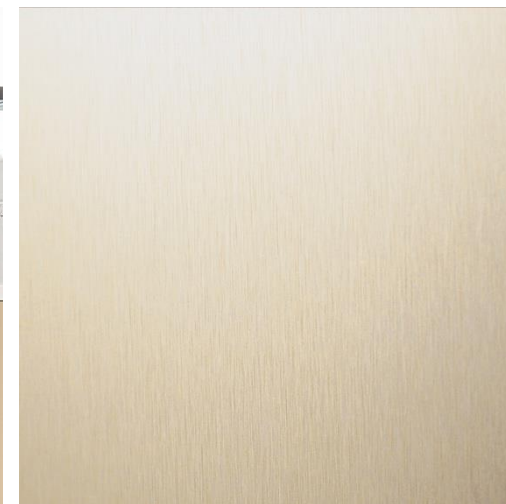
TRESPA  
TOPLAB®

HK Hartson  
Kennedy

# Hospitality



M2042-99 Brushed Brassstoned Aluminum





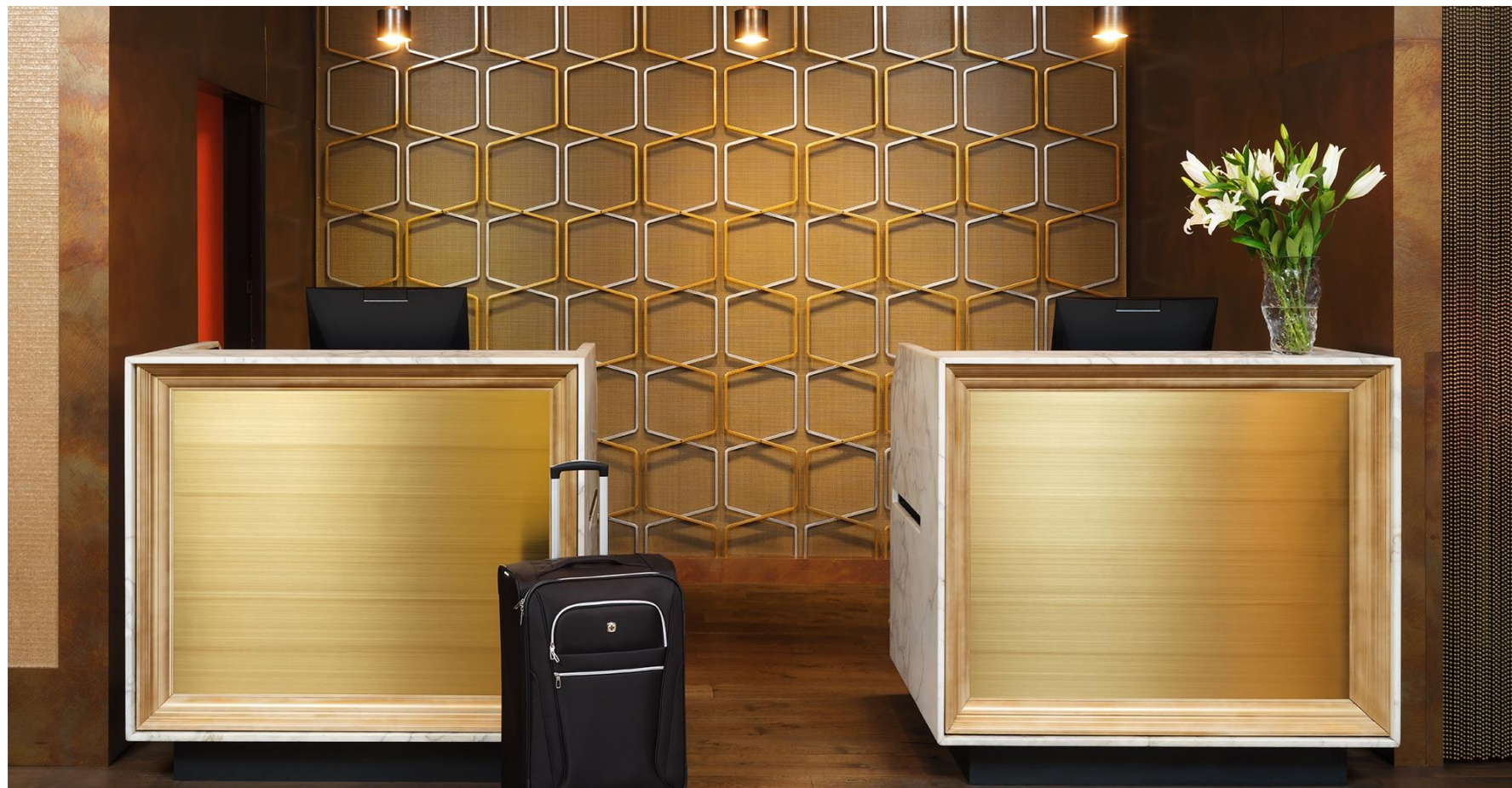
# Restaurant



M9958-99 Antique Rubbed Copper



# Hospitality



M9956-99 Wax Rubbed Brass

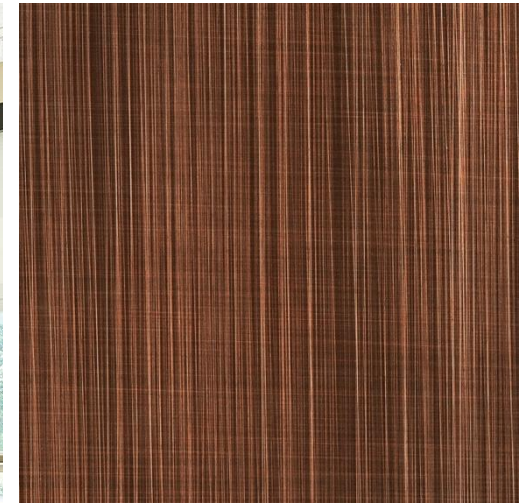




# Healthcare



M5392-99 Copper Veil





# Restaurant



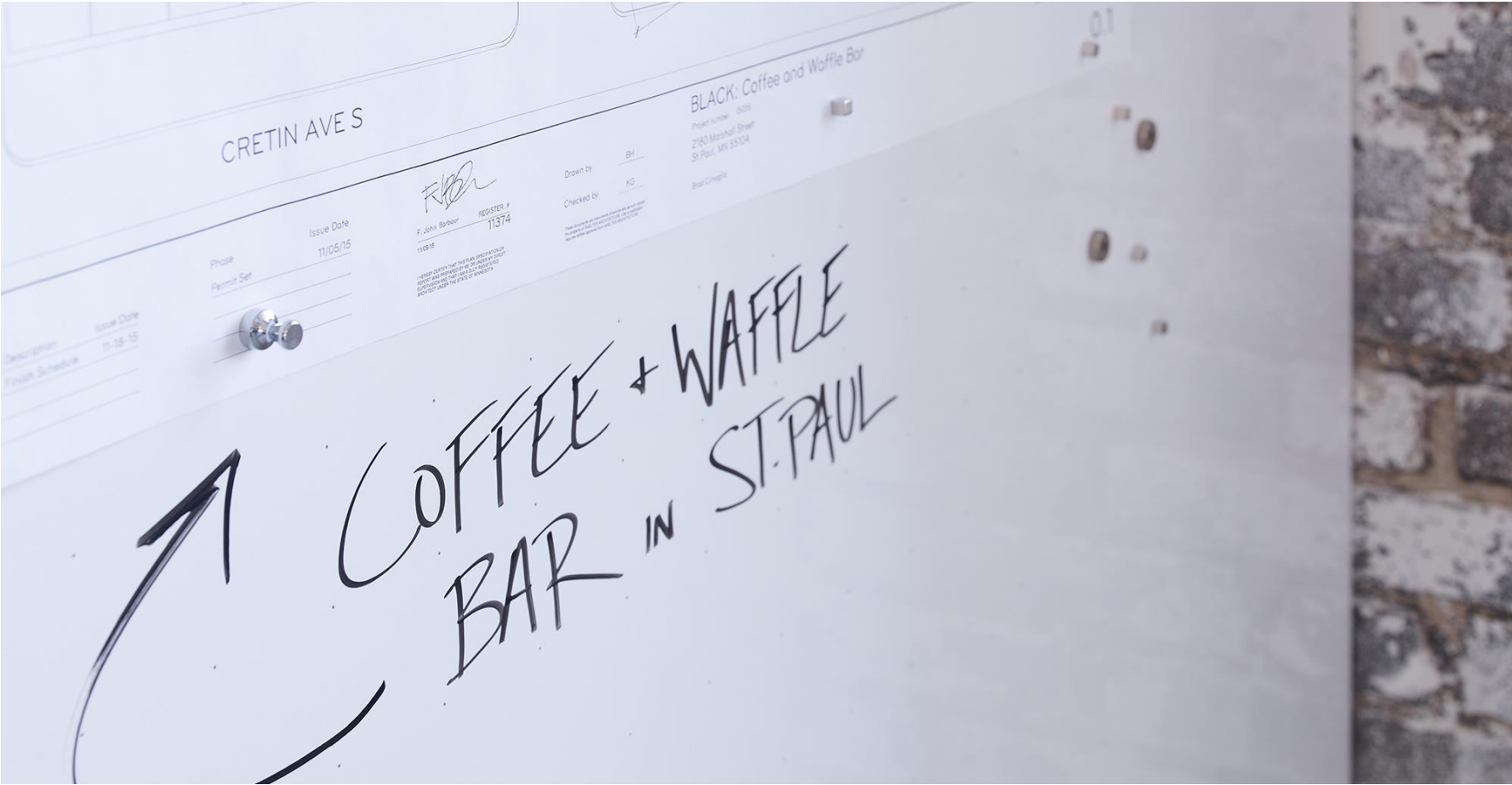
M6814-99 Metallic Black



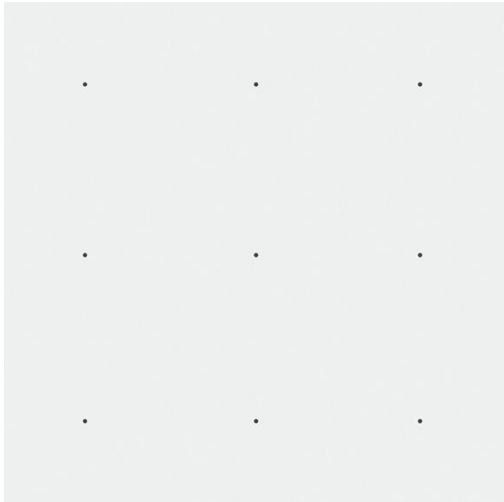




# Office

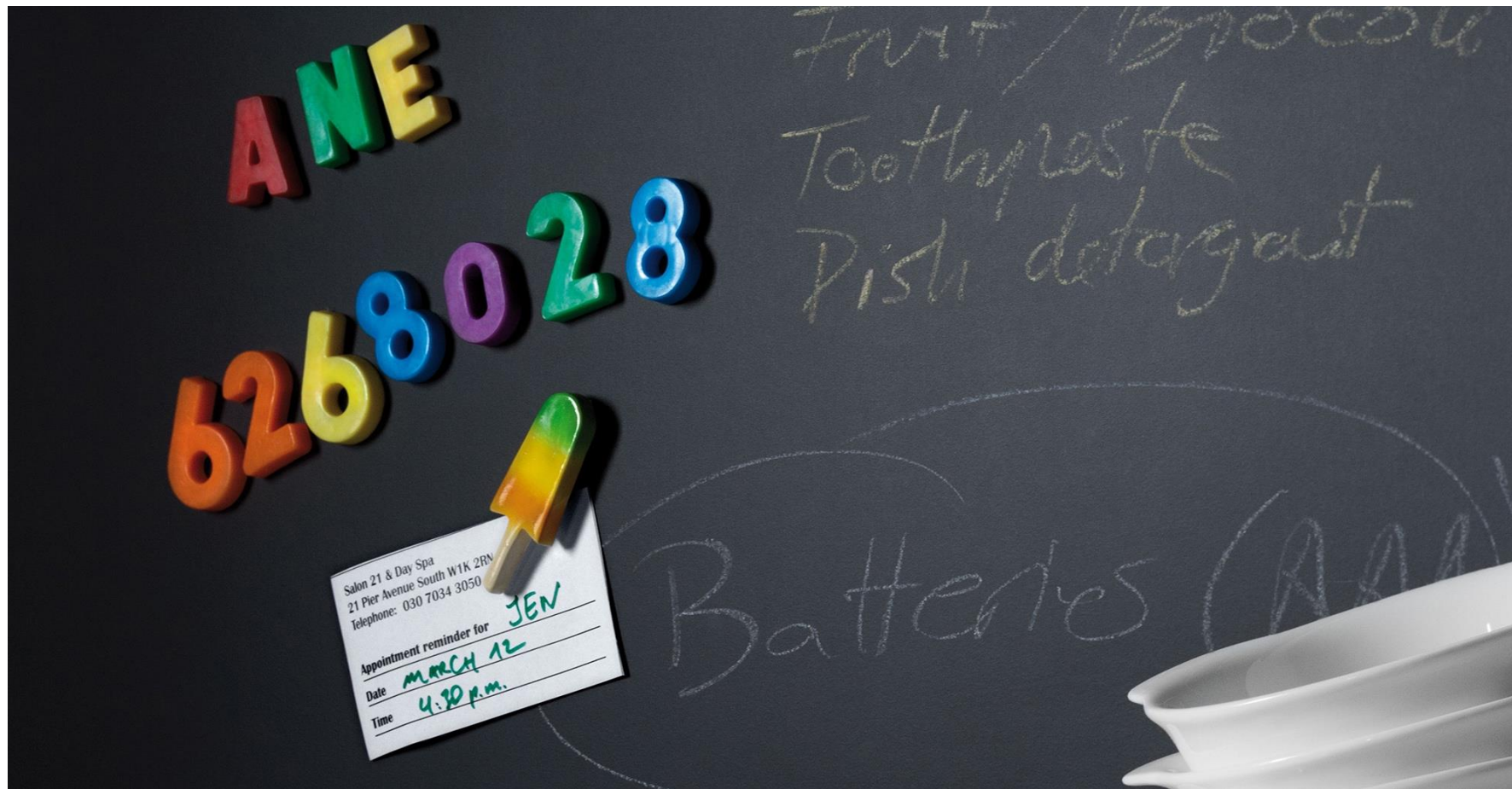


M8202-90 Grid Point Magnetic Dry-Erase Markerboard





# Residential

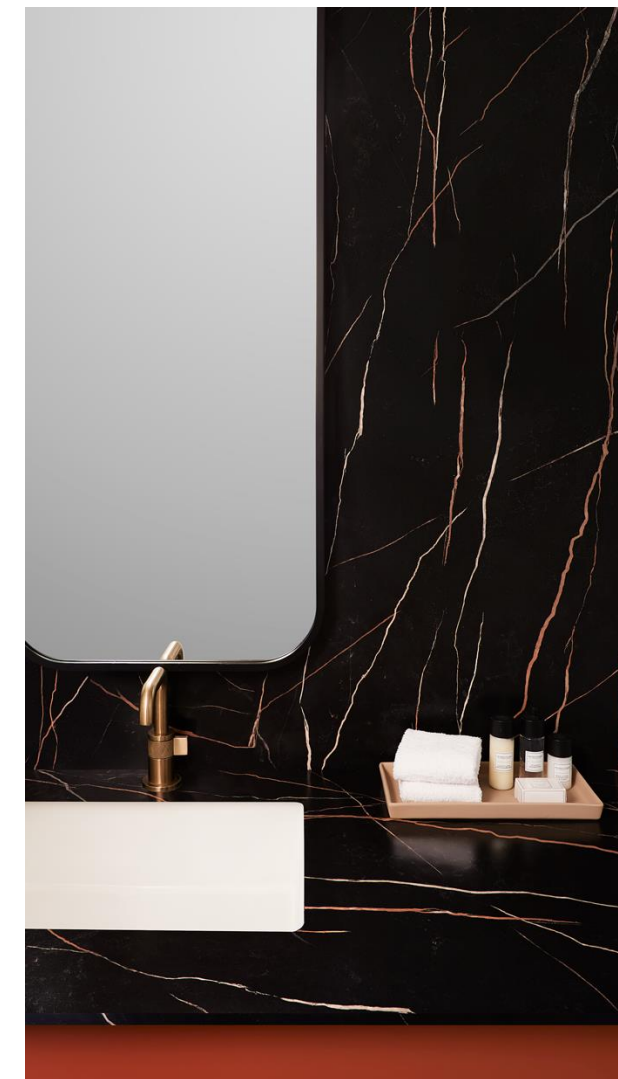


M2253-58 Black Magnetic Chalkboard

# 180fx<sup>®</sup>

Laminate as large as life.

180fx<sup>®</sup> laminate marks a revolution in surfacing with true-to-scale stone and woodgrain patterns that offer visual drama unmatched by any other laminate. Modern, sophisticated high-resolution patterns focus on a natural palette - versatile enough to pair with any interior design concept.





# Textures for 180fx®



# Hospitality



7404-11 Neapolitan Stone with Satin Touch™ texture



# Office



9479-NG Wide Planked Walnut with Natural Grain texture



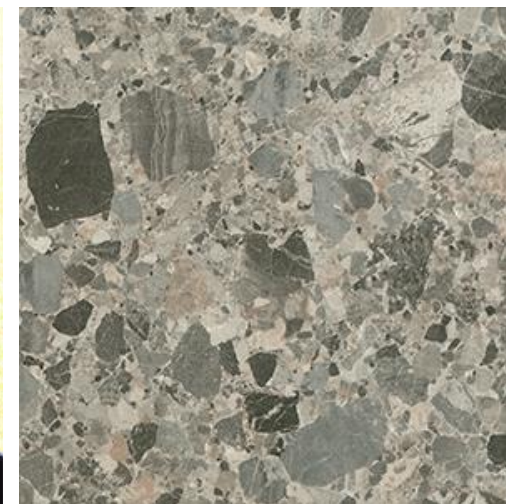
# Restaurant



9921-43 Sahara Noir with Artisan™ texture



# Residential

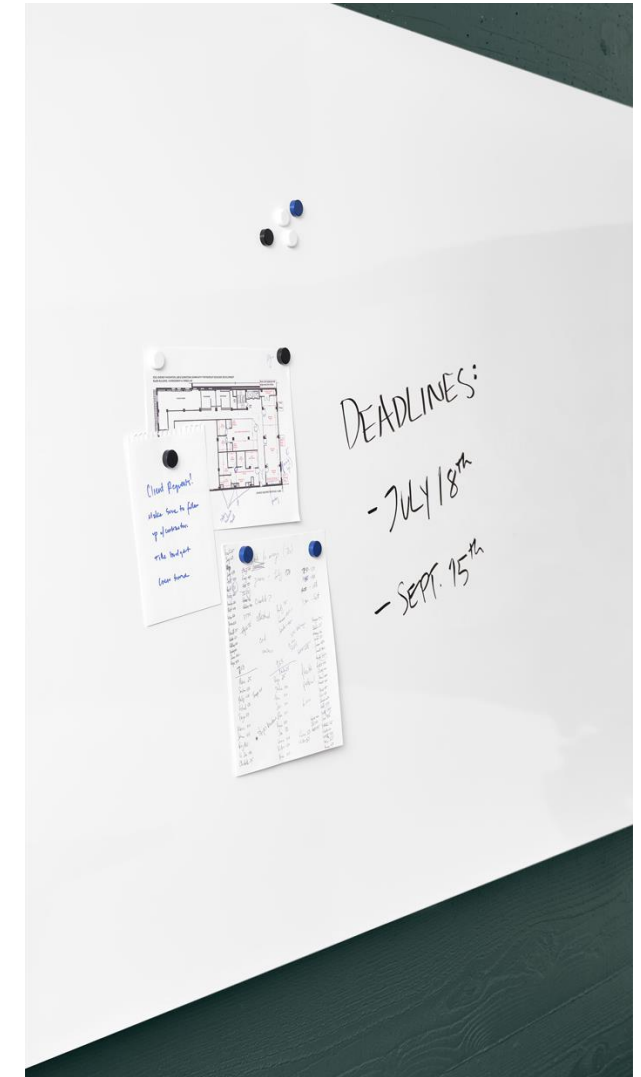


9918-ML Breccia Mojave with Monolith texture

# Formica® Markerboard

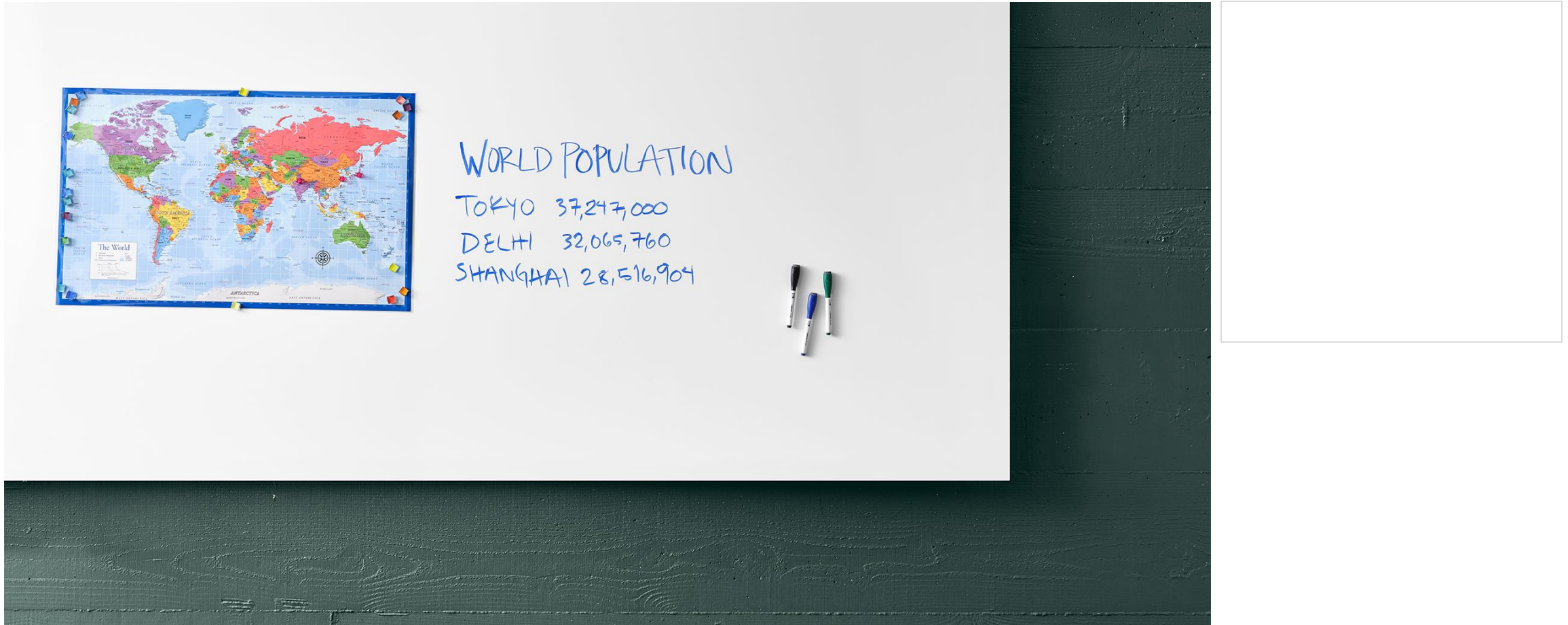
This durable, high gloss, non-magnetic dry-erase surface cleans up instantly, making it ideal for homes, offices, classrooms, and other work environments.

\*All Formica® Laminates in gloss finish (-90) can be markerboard.





# Education



M3091 Crystal White Magnetic Dry-Erase Markerboard

# Office



8240-90 Liquid Glass with Gloss texture



# Office



8795-90 Matrix Blue with Gloss texture

# Formica Envision™

Be original on the original high-pressure laminate.

Design unique surface art on our high-performance laminate using any design, photography, logo, illustration or painting. If you can imagine it, we can make it.

- Custom digital laminate program
- 1 sheet minimum
- Standard laminate & Compact





# Healthcare



# Office





# Restaurant

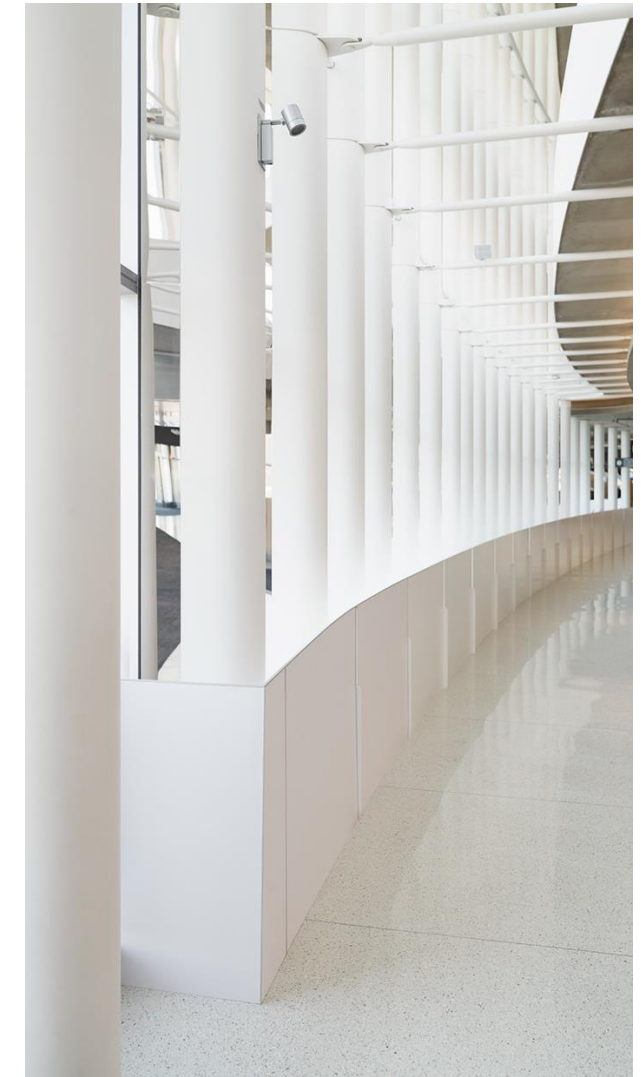


# HardStop®

Decorative protection panels

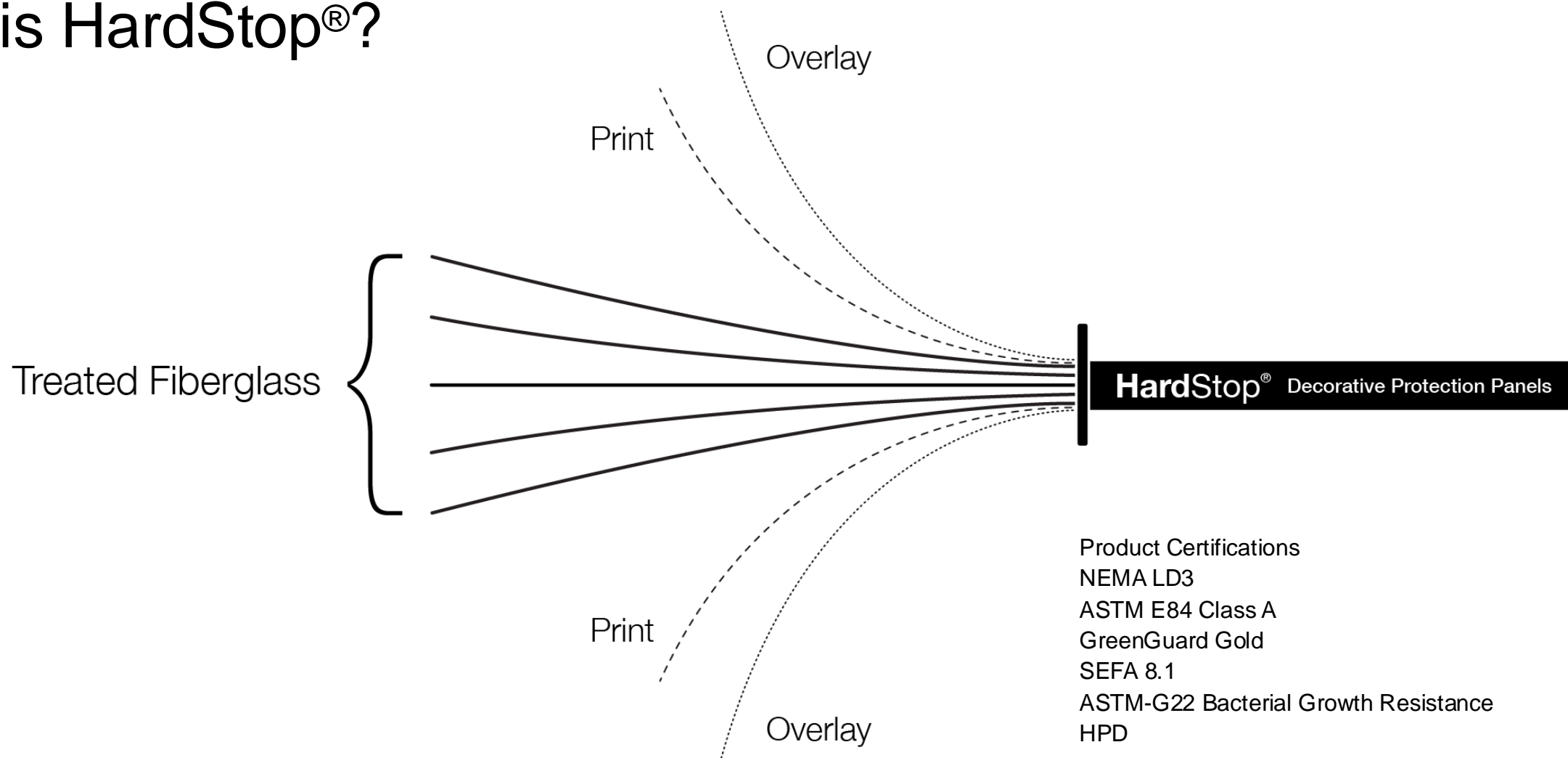
HardStop® is an excellent solution for high-performance wall panels that blends ease of installation and impact resistance with a full range of design selections that coordinate perfectly with other Formica® laminates.

- Impact & water resistant
- Scratch, mar & scuff resistant
- Stain & chemical resistant
- Available in most Formica® colors
- Suitable for standard white drywall





# What is HardStop®?



Product Certifications  
 NEMA LD3  
 ASTM E84 Class A  
 GreenGuard Gold  
 SEFA 8.1  
 ASTM-G22 Bacterial Growth Resistance  
 HPD

# Restaurant



6307H-58 Burnt Strand



# Healthcare



464H-58 Graystone

# Hospitality



8828H-58 Earthen Twill





# Healthcare



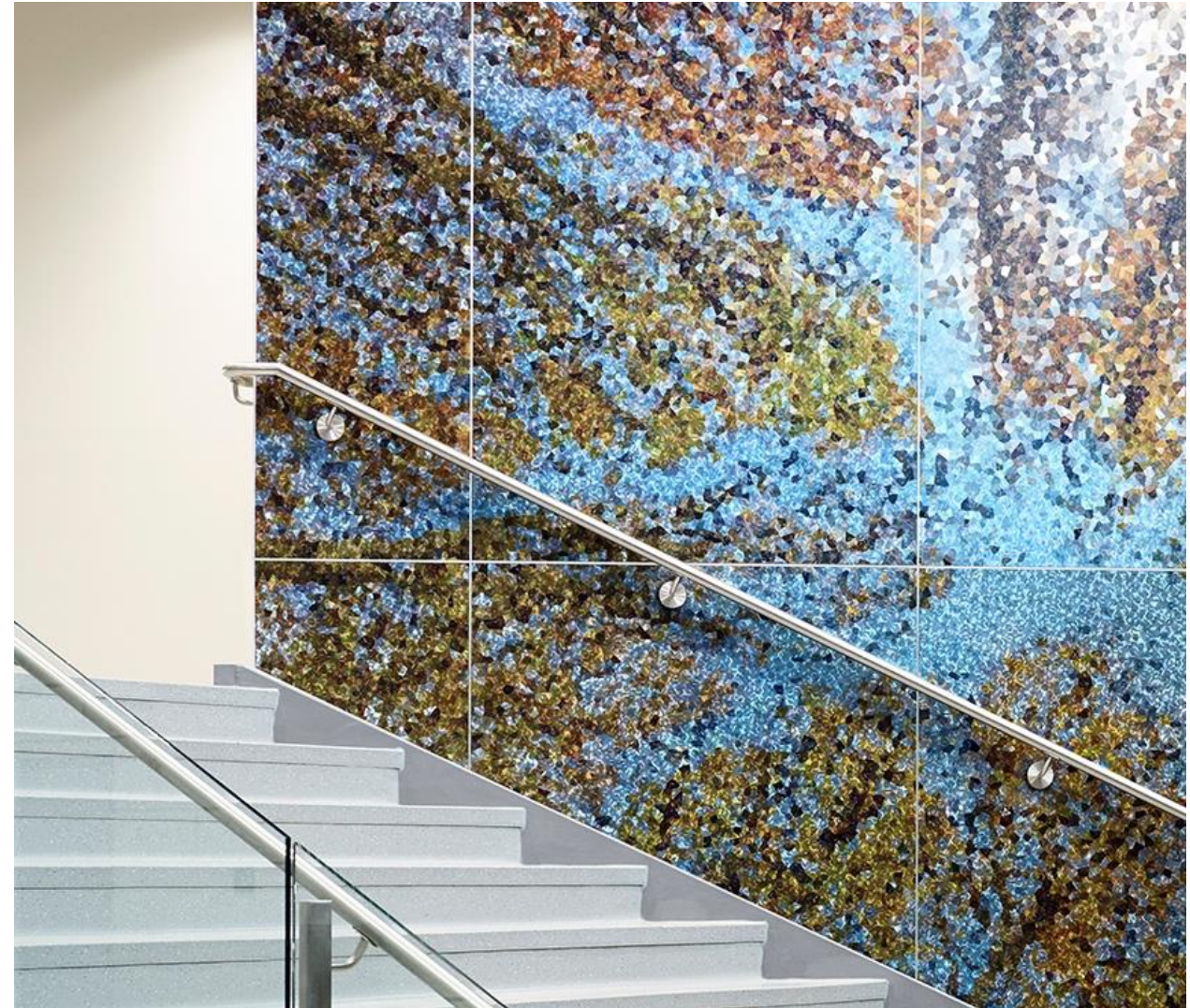
8826H-58 Neutral Twill

# Formica Envision™ **HardStop®**

## Custom wall protection panels

The Formica Envision™ HardStop® Panel program features custom designs, available for projects of 25 HardStop® panels or more. HardStop® Panels are created with a treated fiberglass core for added durability and strength to ensure your project lasts for years to come.

- 58 Matte finish only
- Two sizes: 4'x8' and 4'x10'
- ASTM E84 Class A
- Minimum order quantity: HardStop order of 25+ panels  
(The Formica Envision HardStop portion of the 25 panel minimum can be one sheet or more)

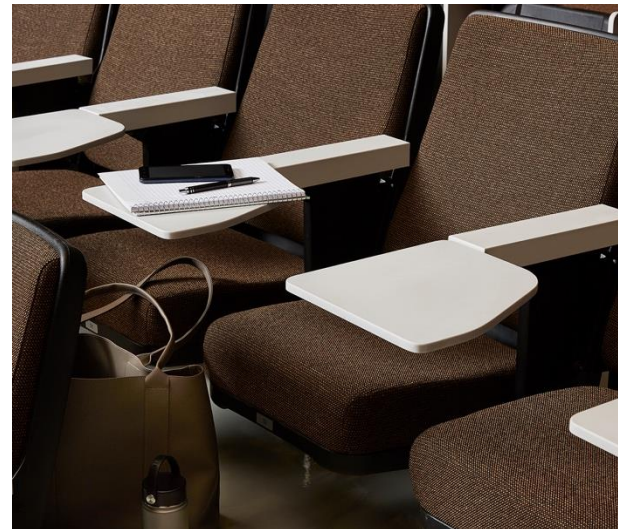




# Everform®

As tough as it is beautiful, Everform® Solid Surface shapes itself to virtually any design concept, offering a palette of modern colors in every mood. The durable, non-porous surface is ideal for a worktable or custom bar top, as well as sinks and shower surrounds. Consider this collection on your next Healthcare, Education, Hospitality or Residential project. Your design creativity with Everform® Solid Surface has no boundaries.

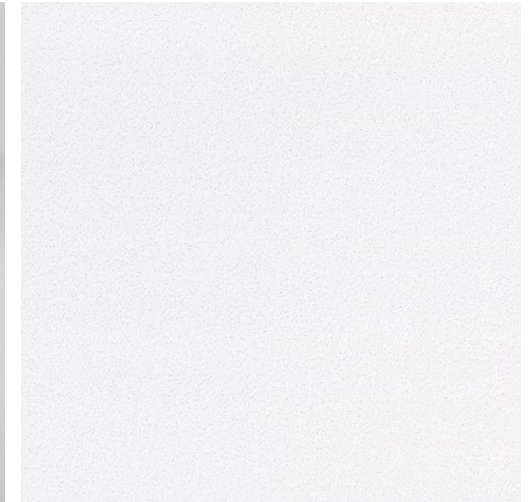
- Acrylic sheets | Sinks | Wet walls
- 40 colors
- 1/2" x 30" x 144"
- Thermo-formable
- Class 1(A) fire rating
- Repairable
- Renewable



# Healthcare

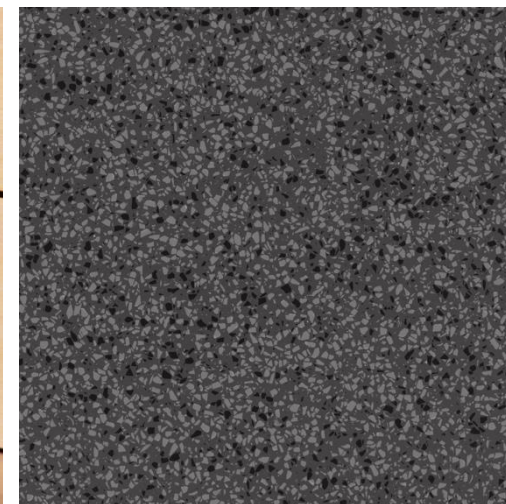


408 Luna Brite White





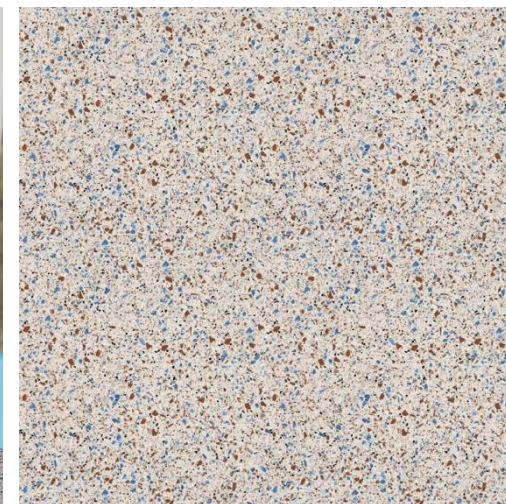
# Restaurant



411 Grafite Terrazzo Matrix



# Education



770 Bottle Glass Quartz



# Sinks



## Vanity

**1612**  
**102 Arctic**  
**109 Brite White**



## Vanity

**1613**  
**102 Arctic**



## Vanity

**1513**  
**102 Arctic**  
**109 Brite White**



## Kitchen

**1729**  
**102 Arctic**



## Single

**1012**  
**102 Arctic**



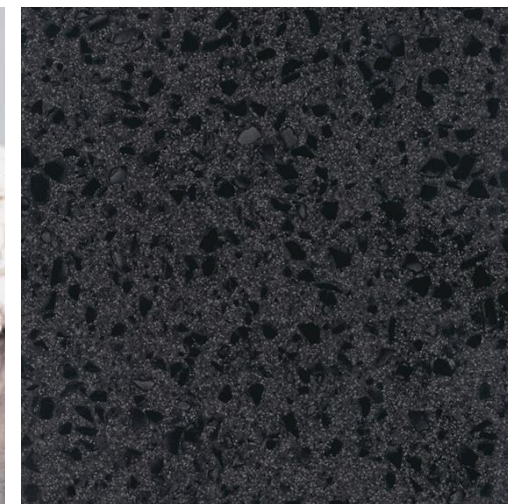
## Single

**1815**  
**102 Arctic**

# Hospitality



501 Black Lava with Vanity 1612





# Healthcare

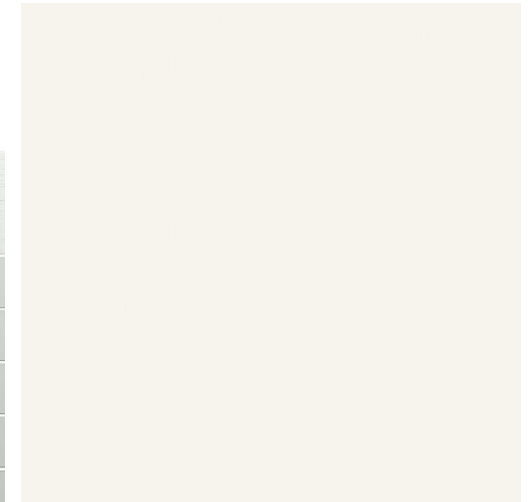


408 Luna Brite White with 1815 single bowl

# Wet Walls



102 Arctic



1/4" x 36", 48" & 60" x 96"

601 Bleached Concrete &  
757 Luna Sand (48" x 96" only)

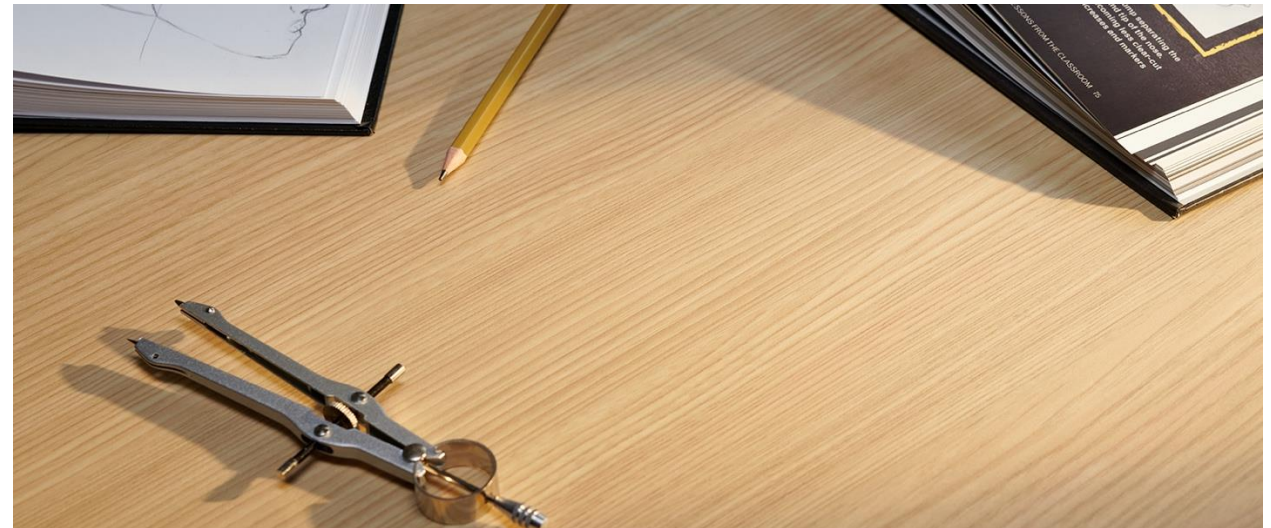


# Formica® Laminate Antimicrobial Collection

The Formica® Laminate Antimicrobial Collection with BioCote® technology controls the growth of microorganisms for lasting surface protection.

Designed to work in conjunction with regular cleaning and disinfecting practices to protect the surface against the negative effects of odor causing and staining microbes like bacteria and fungi.

- 20 colors
- Grade 12 and 20
- 58 Matte finish only
- Two sizes: 4x8 and 5x12
- No color shift from standard HPL
- Product not for sale in Canada



# Healthcare



8826A-58 Neutral Twill



# Hospitality



909A-58 Black



# Hospitality



5883A-58 Pecan Woodline



# ColorCore®2

## The original Color-Through Laminate

Basic, affordable materials like ColorCore®2 Laminate can be used in highly creative ways to transcend their fundamental practicality. Now more versatile than ever, ColorCore®2 Laminate offers an assortment of inspiring solid colors and patterns that go all the way through—so there's no brown line.

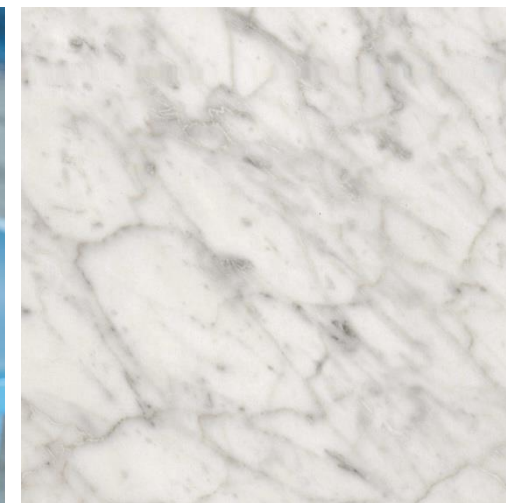
- Color-through laminate
- No brown line
- Vertical & horizontal applications
- Select solid colors and patterns



# Hospitality



6696C-58 Carrara Bianco



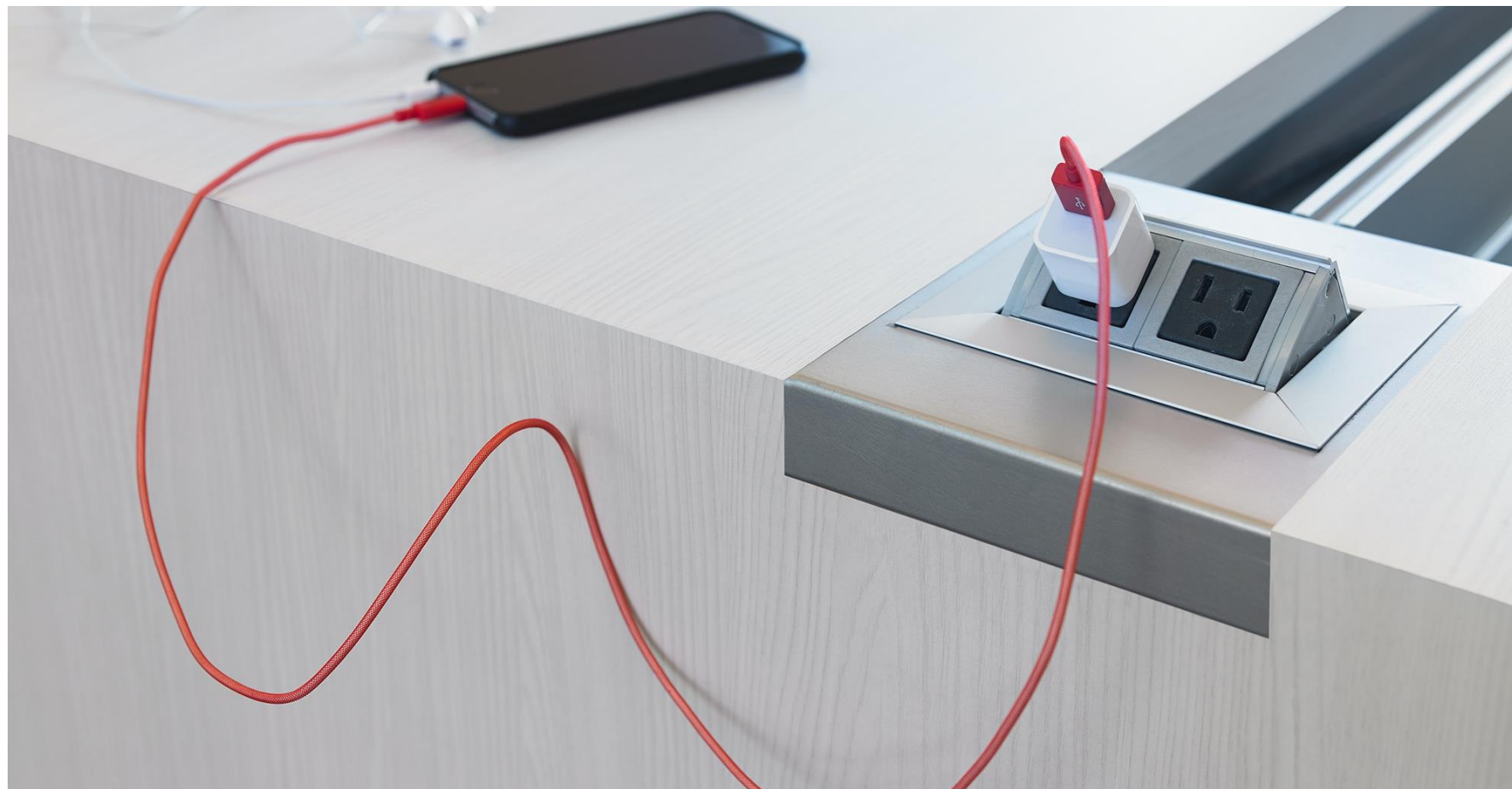


# Commerical & Residential



949C-58 White

# Office & Education



8841C-58 White Ash





# Healthcare



912C-58 Storm



# Formica® Compact

Structural phenolic panels

Versatile, practical and beautiful, Formica® Compact is a structural, two-sided laminate that provides endless creative possibilities for fixtures and furniture in commercial, institutional & hospitality settings.

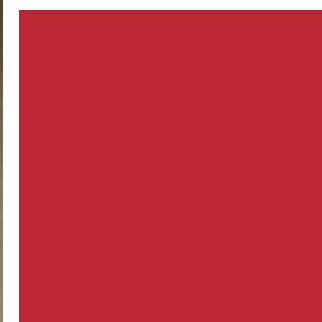
Formica® Compact has high strength, impact, water and humidity resistance and can be routed to create different shapes and forms. Available in thickness of 1/8" to 1".

- Structural
- Black core
- No wood core or gluing required





# Health & Wellness



6212-58 Wheat Strand and 839-58 Stop Red

# Education



923-58 Surf



# Commercial



909-58 Black



# Education



7897-58 Spectrum Green and 8244-58 Night Forest





# IdealEdge®

Perfect from every angle.

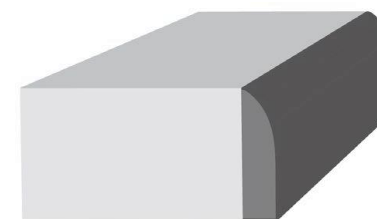
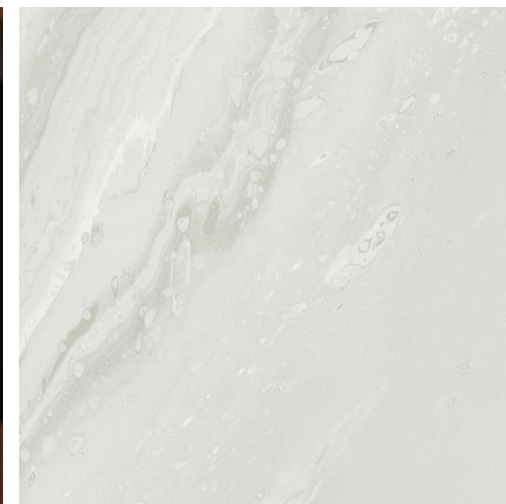
IdealEdge® offers decorative edges that bring a fresh look to laminate countertops, islands and more. What you see is a perfectly finished edge - and no more brown seam lines.

Available in 4 versatile edge profiles

- Ogee
- Bullnose
- Waterfall
- Double Radius



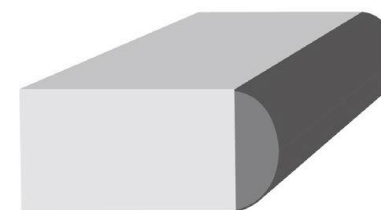
# Waterfall Edge



5014-11 White Painted Marble in Satin Touch™ texture

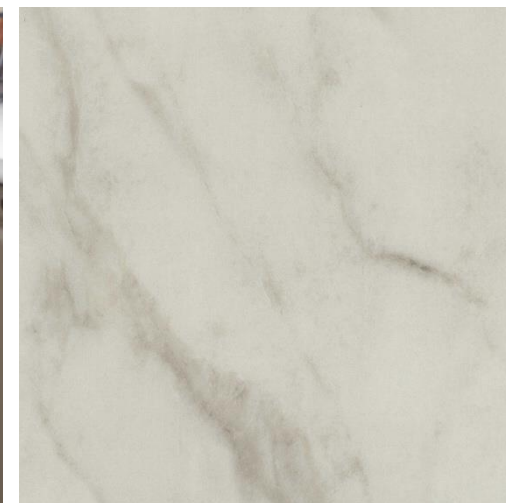


# Bullnose Edge



3476-46 Jet Sequoia with Etchings™ texture

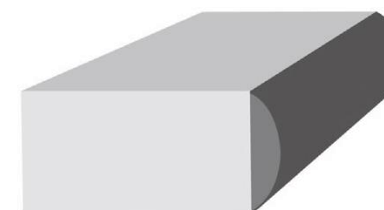
# Ogee Edge



5018-11 Calacatta Cava with Satin Touch™ texture



# Double Radius Edge



7402-11 Pietra Grafite with Satin Touch™ texture

# TRESPA® TOPLAB®

Using innovative surface technology, Trespa® TopLab® elevates quality and performance to new heights. The offer of an extensive range of colors, patterns, and panel thicknesses, make it ideal for comprehensive interior fit-outs. Whether for wall linings, worktops, lockers, cabinetry, or partitions, these panels ensure optimal performance throughout the entire interior.





# Future-proofed to inspire



## TRESPA® TOPLAB® PLUS

Ideal for harsh laboratory environments, Trespa® TopLab® Plus withstands most aggressive chemicals and cleaning agents, does not support bacterial growth and helps ergonomics whilst avoiding contamination.

Colors Available: 11



## TRESPA® TOPLAB® PLUS ALIGN

Trespa® TopLab® Plus Align addresses the issue of environmental care, providing the same high-quality standards of Trespa® TopLab® Plus with a strong commitment to the use of renewable materials.

Colors Available: 11



## TRESPA® TOPLAB® VERTICAL

Trespa® TopLab® VERTICAL offers chemical resistance and an easy-to-clean surface for vertical applications such as wall solutions, fume hoods and backsplashes. Labs, hospitals and scientific facilities are filled with vertical surfaces that need to be resistant to chemicals, impacts, scratches and moisture.

Colors Available: 146



## TRESPA® TOPLAB® BASE

Trespa® TopLab® BASE is a popular choice with worktop and cabinetry builders for educational and laboratory institutions where impact and wear resistance is of great importance, while chemical resistance is not critical. Trespa® TopLab® BASE is perfect for cabinets and countertops that get heavy use and frequent cleaning.

Colors Available: 23

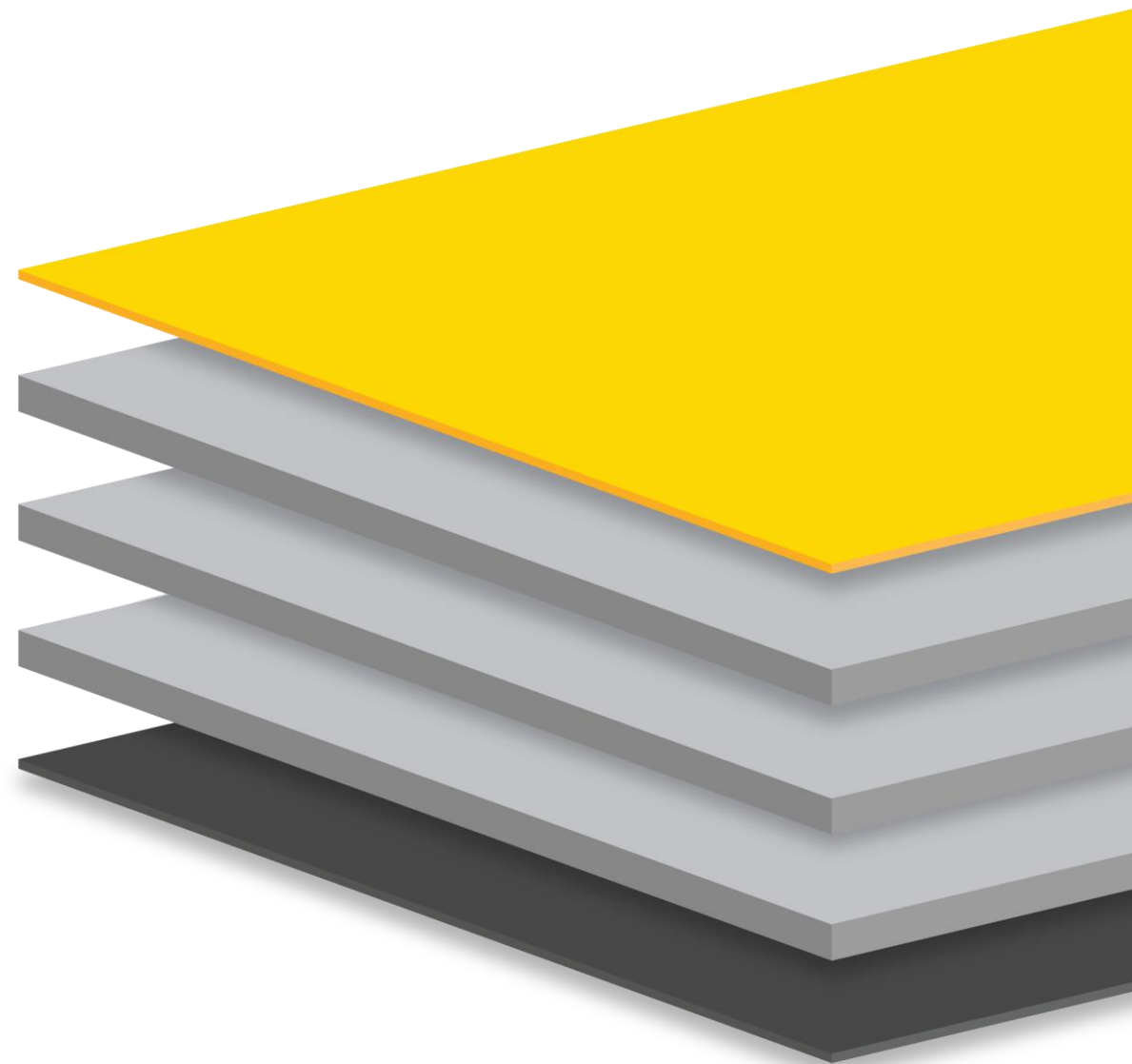
# The innovation is in the core...

## **TOPLAB® PLUS**

The core is made up of natural fibers (wood and/or paper) and thermosetting resins based on phenol.

## **TOPLAB® PLUS ALIGN**

The added value results from the increased use of natural materials in the core, made possible by substituting 50% of phenol in the resin with lignin (a renewable material).





# Educational Lab



VP118 Silver Grey – TRESPA® TOPLAB® Plus

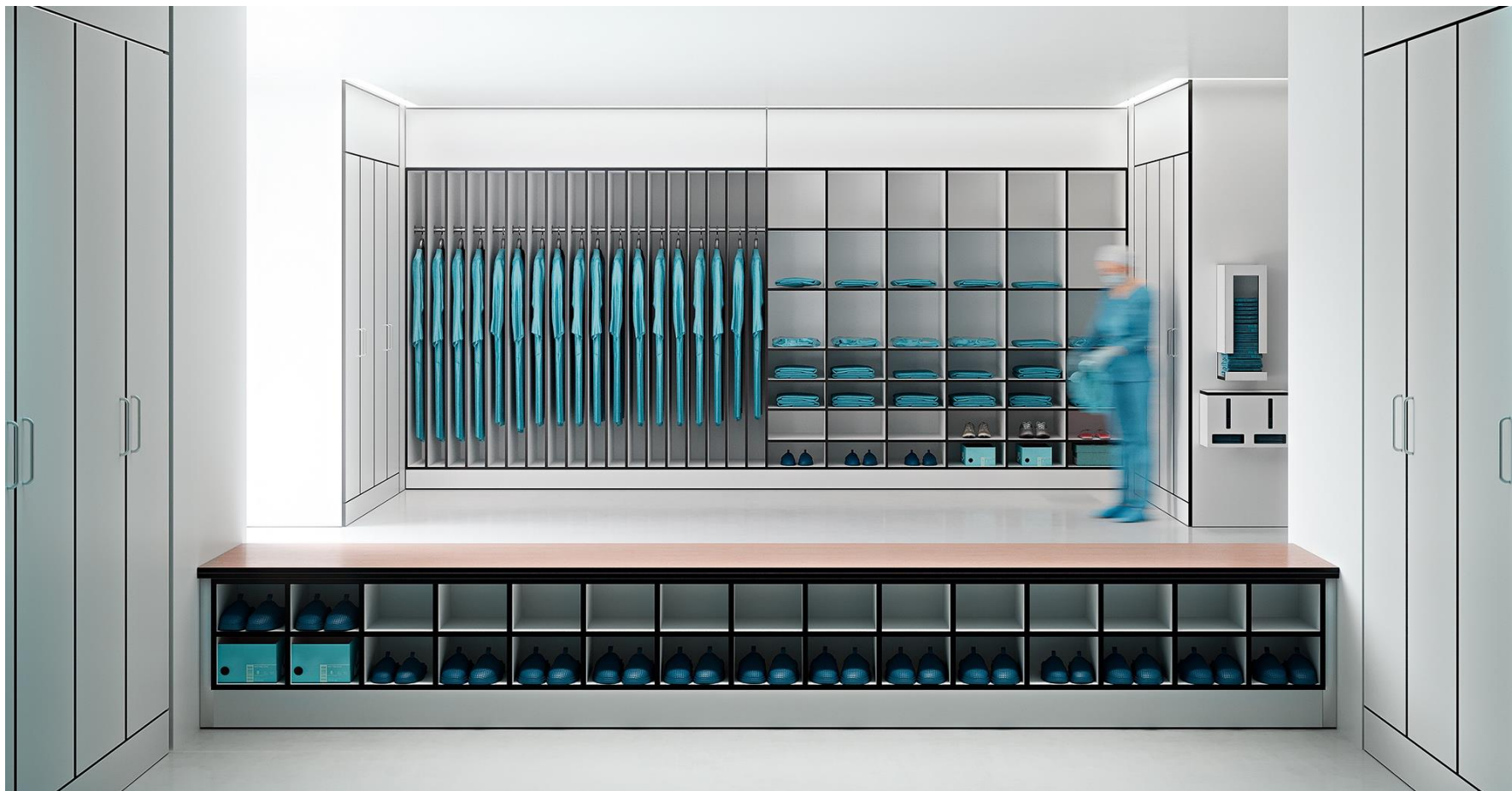
# Healthcare Lab



VP164 Mystic White – TRESPA® TOPLAB® Plus Align



# Healthcare



VP106 Pure White - TRESPA® TOPLAB® Vertical

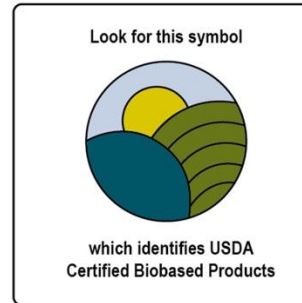
# Education



VP122 Slate Grey - TRESPA® TOPLAB® Base



# Certifications



SEFA 3  
Plus – Plus Align  
Tested SEFA list for 24 hours.

SEFA 8  
Vertical and Base  
Tested SEFA list for 1 hour.

ISEGR Food Contact  
Base  
Plus/Plus Align

USDA Biopreferred  
Plus (70%)  
Plus/Plus Align (86%)  
Vertical FR (57%)

GreenGuard Gold  
Base  
Plus/Plus Align  
Vertical

Fire Rated Testing  
Vertical (Only)  
Base (Only)



# Arpa

## Arpa for Americas collection

Italian designed premium stones and deep textured woodgrains with over 70 years of history making any environment or piece of furniture original and creative.

- 55 colors
- 0.8mm thickness – 3050mm x 1300mm sheets
- Stocked in North America
- 1 sheet minimum





# Residential



J3412-JU Voyage Bronze

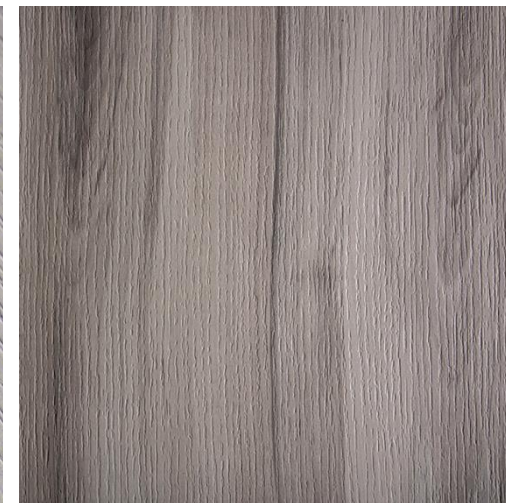




# Hospitality

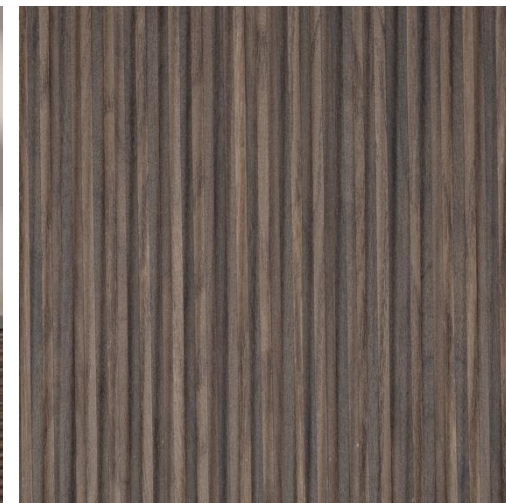


J4611-JD Bramble





# Commercial



J4645 Caravella Dark, Arpa® TUET



Based in Marion, Indiana, Hartson-Kennedy has been producing laminate countertops for over 75 years. The combination of stunning materials finished with the touch of custom edge profiles provides a complete high-end experience. The portfolio includes prefabricated and custom laminate countertops, butcherblock and more.





# Postform Countertops

Any time laminate is heated and profiled, it's considered postform.

Manufactured by high-end machinery or in our custom shop, featuring multiple sizes and edge profile options.



# Edge Profiles



Amoré



Caspian



Dura-Top



E-Top 2000



Waterfall



---

## Q & A



FENIX®



Arpa 

TRESPA®  
TOPLAB®



---

# Thanks



FENIX®



Arpa 

TRESPA®  
TOPLAB®

